

Young County 4-H Family Guide 2018-2019



“All your questions can be answered!!!”

This guide is made possible by the Texas A&M AgriLife Extension Service-Young County and the Young County 4-H and Youth Development Committee.

4-H Family Guide
Table of Contents

Office Information & Staff _____	3
Welcome _____	4
Young County 4-H _____	5
4-H Membership _____	5
4-H CONNECT Instructions _____	7
What Do You Do in 4-H? _____	9
What is a 4-H Project? _____	9
4-H Club Meeting _____	11
Young County 4-H Youth Council _____	12
4-H Record Book Program _____	13
County Awards Program _____	14
4-H Contests _____	17
Texas 4-H Youth Development Opportunity Scholarships _____	19
Leadership Opportunities _____	19
Parents: Partners on 4-H Team _____	22
4-H Animal Project Calendar _____	26
Family & Consumer Science Project Calendar _____	28
Recommended Procedure for Eligibility & In Attendance Days _____	30
4-H Structure & Program Impacts _____	31
Most Frequently Asked Questions _____	33
4-H Glossary _____	34
Appendix _____	36
I – Medal & Special Awards Form _____	37
II – County Extension Office Location _____	40
III – Club Locations & Meeting Information _____	41
IV – Declaration of Eligibility _____	42
V – 2018-2019 4-H Dates (tentative) _____	43
VI – District 3 Important Dates _____	44
VII – 4-H Volunteer Screening _____	45
VIII – 4-H Websites _____	46

Texas A&M AgriLife Extension Service

Young County Office

3201 Hwy 16 South, Graham
940/549-0737 * FAX 940/549-8140

Email address: young@ag.tamu.edu

Young County Website: <https://young.agrilife.org/>

State 4-H Resource Website: <http://texas4-h.tamu.edu/>

Office hours: Monday – Friday 8:30 am to 5 pm

Extension Staff:



Michelle McClanahan
Office Manager
mmcclanahan@ag.tamu.edu



Justin Rogers
CEA-ANR
Justin.rogers@ag.tamu.edu

Penny Berend
CEA-FCH
Penny.berend@ag.tamu.edu

WELCOME TO THE YOUNG COUNTY 4-H PROGRAM

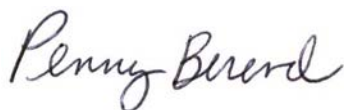
Dear Families,

Welcome to the Young County 4-H program! 4-H is the youth development organization of Texas A&M AgriLife Extension Service. Our purpose is to provide young people the opportunity to learn and develop life skills through hands on learning experiences. Young people are **OUR** future so we want to make every effort to extend the wealth of knowledge and learning experiences available through the Land Grant University System. Texas A&M AgriLife Extension Service is part of the Texas A&M University System with cooperation of local Commissioner Courts.

The 4-H Program has opportunities to offer all youth in both urban and rural communities. 4-H members participate in many activities which can include everything from aerospace to showing livestock. With so many 4-H projects and activities available, many new members do not understand the overall process. The Young County 4-H and Youth Development Program Advisory Committee have helped developed this guide for both new and old 4-H families. We hope that this will be a quick reference guide for you to use and make your 4-H experience more enjoyable.

4-H Is A Family Affair. 4-H members select various projects with help of their parents and Extension Staff. The parents then advise, counsel, and assist their child in taking care of, constructing, or being involved in the project.

We look forward to your participation in the Young County 4-H program.



Penny Berend
CEA-FCH
penny.berend@ag.tamu.edu

Justin Rogers
CEA-Ag/NR
justin.rogers@ag.tamu.edu

SPECIAL NOTE

Provisions from the Americans with Disability Act will be considered when planning educational programs and activities.

Please notify the Young County Extension Office if you plan on attending an Extension Education Program and need specialized services.

The members of Texas A&M AgriLife will provide equal opportunities in programs and activities, education, and employment to all persons regardless of race, color, sex, religion, national origin, age, disability, genetic information, veteran status, sexual orientation or gender identity and will strive to achieve full and equal employment opportunity throughout Texas A&M AgriLife. This information given herein is for educational purposes only. Individuals with disabilities who require an auxiliary aid, service, or accommodation in order to participate in Extension sponsored events are encouraged to contact the Extension office at (940) 538-5042 or 538-5052 to determine how reasonable accommodations can be made a week before the event.

The Texas A&M University System, U.S. Department of Agriculture, and the County Commissioners Courts of Texas Cooperating

YOUNG COUNTY 4-H

Slogan: “Learn by Doing”

4-H Motto: “To Make the Best Better”

4-H Pledge: In support of the 4-H Club Motto, “**To Make the Best Better,**” “I pledge . . .
My **head** to clearer thinking, My **heart** to greater loyalty, My **hands** to larger service,
My **health** to better living, for my CLUB, my COMMUNITY, my COUNTRY and my WORLD.”

4-H Parent Pledge:

I pledge my HEAD to give my child the information I can, to help him/her see things clearly, and to make wise decisions.

I pledge my HEART to encourage and support my child no matter whether he/she has successes or disappointments.

I pledge my HANDS to help my child's club; if I cannot be a leader, I can help in many equally important ways.

I pledge my HEALTH to keep my child strong and well for a better world through 4-H, for my child's club, our community, our country and our world.

4-H Prayer: “Help me O Lord to live so that the world may be a little better because thou didst make me. Amen.”

4-H Emblem and Colors: The 4-H club emblem is a four leaf clover with the letter ‘H’ on each leaf. The four Hs stand for Head, Heart, Hands and Health. Leaves on the clover are green and the H’s are white. The white is for purity and the green is nature’s most common color. Since the green symbolizes growth in nature, it is symbolic of youth and life.

4-H Creed: I believe in 4-H Club work for the opportunity it gives me to become a useful citizen. I believe in the training of my **HEAD** for the power it will give men to think, to plan and to reason. I believe in the training of my **HEART** for the nobleness it will give me to be kind, sympathetic and true. I believe in the training of my **HANDS** for the dignity it will give me to be helpful, useful and skillful. I believe in the training of my **HEALTH** for the strength it will give me to enjoy life, resist disease and work efficiently. I believe in my county, my state and my community and in my responsibility for their development. In all these things I believe, and I am willing to dedicate my efforts to their fulfillment.

4-H MEMBERSHIP

Program Year

The 4-H program year begins on September 1 and concludes on August 31 the following year.

Membership Policies

Any person, regardless of race, color, religion, sex, national origin, age, disability, genetic information or veteran status, may enroll as a 4-H member.

- Texas 4-H activities and events are open to enrolled members between the grades of **3rd through 12th**.
- 4-H CONNECT and Enrollment – Every September members must re-enroll in 4-H to be eligible to participate in any 4-H activity. This year Young Co. 4-H members will need to fill out a green enrollment form for the Extension office **AND** go online to register through 4-H CONNECT. The website is <https://tx.4honline.com>. Participation fee is **FREE FOR members if enrolled by Oct. 31**. After then, the price is \$25.00. Directions on enrolling online are included as Appendix XIII. If you have any questions,

please call our office and we will help you through this process. If you have previously enrolled through 4-H CONNECT, you will need to go online, simply edit your information and submit.

- Events that require registration, certification or entry during the summer prior to the beginning of the 4-H year – county Extension agents may sign entry forms for events that will occur during the 4-H year for youths who will become eligible for and enroll in 4-H on September 1, but these youths may not participate in 4-H competitive events and activities until September 1.
- Zero-based enrollment – for accountability purposes and the requirement for keeping mailing lists updated, the Texas 4-H program will continue to use zero-based enrollment, meaning that we start new every 4-H year and re-enroll previous members and volunteers and enroll new members and volunteers.

Cross-County Memberships

Membership cannot be held simultaneously in more than one county or state, but membership may change with residence, as long as the member competes in a given project in only one county or state.

- A member of a 4-H club must participate in 4-H learning groups and other educational activities under the guidance of a 4-H volunteer who is enrolled in the county Extension office.
- A member of a 4-H club is expected to enroll in one or more 4-H projects and provide written evidence of project completion.
- Exception – if it is more convenient, desirable or logical for a 4-H member or Clover Kid to belong to 4-H in an adjacent county, he or she may do so if agents in both counties involved agree. The agreement should be in writing. In addition, crossing county lines requires either changing all membership from the home to the host county or participating in the project in the host county but representing the home county in events and activities.

Project Enrollment

- All 4-H members must be enrolled in at least one project.
- A member may add or delete project enrollments at any time during the 4-H year.

Statewide Projects/Activities

- The 4-H projects listed in this handbook are offered in the majority of the counties in Texas. Please contact your county Extension agent for more information about a project or activity discussed in this handbook.

County Projects/Activities

- Some counties offer additional projects of interest locally. Check with the county office to see what is available.
- Counties provide the materials and training guides for these projects, and they may vary from area to area depending on local resources and needs.

Events and Activities

- Youth competing in state, district and/or county events and activities must be in the 3rd grade (or 8 **AND** in the 3rd grade) through the 12th grade of the 4-H year.
- Youth must be enrolled in the project during the current year.



INSTRUCTIONS



1. Access the 4-H CONNECT on-line system at: <https://tx.4honline.com/>.
2. **New Members:** Select [I need to set up a profile]. **Returning Members:** Select [I have a profile] or [I forgot my password]. *Contact County Extension Office for resetting assistance.*
3. **New Members:** Select Adult or Youth from the drop down menu and click [Add Member]. **Returning Members:** Click [Edit] to the right of the inactive member's profile.
4. Once all profile information is current and correct under the Personal Information, Additional Information, Health Form, and Participation areas of enrollment continue to the Invoice page.
5. Review your invoice to ensure that the participation fee has been charged and it is correct. If you have been awarded an award certificate or a scholarship to cover your participation fee, enter the award code in the award code box. Once information has been reviewed, click continue to the Payment screen.
6. **New Members:** If you are new to 4-H, you can add your credit card payment information to 4-H CONNECT and it will be securely stored. Click the orange [Add New Credit Card] link if paying with credit card or select the county club check option. **Returning Members:** If the credit card on file has been updated you will need to remove it and add the credit card again using the new information.
7. Select the appropriate method of payment by clicking on the correct button, then click [Select Payment Method.]
8. On the "Confirm page" each person will be required to click the [Pay By Computer Terms and Conditions]. Click [Submit Enrollment]
9. Once an enrollment (new member) or re-enrollment (returning member) has been submitted, it is sent to the county office for review and approval. Once approved and paid for, an email confirmation will be sent to the family email address. Payment by 4-H Check can take up to 2 weeks to process. An active membership status **WILL NOT** be granted until participation fees have been received and marked as paid.

4HConnect Instruction pages can be found online at <https://tx.4honline.com/>.

NEW MEMBERS

Set up **only one (1) FAMILY profile household** on 4-H CONNECT.
 Write down and place in a secure location the email address and password for the account.
 Contact the local County Extension Office for assistance in resetting the account.
 Add individual youth and adult profiles (members) in your family profile. Adult/Youth and family profiles must be entered for an enrollment to be reviewed and accepted.

RETURNING MEMBERS

DO NOT establish another family or member profile on 4-H CONNECT if you already have one in the system. Contact the local County Extension Office for assistance with the email or password if forgotten.
 When you access your profile to re-enroll **REVIEW YOUR PROFILE VERY CAREFULLY**. Incorrect information can create problems for you, your family, and the Extension Office when trying to communicate, accessing appropriate fees, acquiring school absences, etc.

TEXAS 4-H CONNECT

FAMILY ENROLLMENT TIPS

<https://texas.4honline.com>

RETURNING FAMILIES

1

Login with your e-mail address and password.

If you have forgotten this information contact the Extension Office

Do Not Create a NEW Family Profile

2

Select "Continue to Family". Click the EDIT button for the member that will be renewing their membership for the new year.

You can only edit one membership at a time.

3

Click to "Enroll for the 2018-2019 Year" and update information that has changed since the last enrollment

UPDATE SCHOOL and GRADE! Also select the club and projects.

4

Payment screen will follow the Invoice Screen. Enter a debit/credit card to cover the participation fee.

Avoid using Internet Explorer as the pay option may not show up in the browser.

5

Make sure to continue until you can click on the "Submit" button. Then click submit.

Submissions will show as "pending" until the County Extension Office can approve them. Volunteers will also need State approval.

NOTE: If your family has moved to a NEW county in Texas, contact your previous Extension Office to have your FAMILY PROFILE moved to your new county. Do not create a new profile!

NEW FAMILIES

1

Select "I need to setup a profile" and submit the required information

Use an e-mail address that you CHECK! This will be how you get communication from the Extension Office and club managers.

2

Enter a NEW youth or adult members. Use the "Add Member" tab on the right side of the screen

You can only complete one membership at a time. Adult membership do require 2 trainings to be completed.

3

Enter information in all the required fields. NOTE: Enter the correct school grade, as it connects to member eligibility.

Select at least one club and one project area. Skip the activity, awards, and group tabs.

4

Payment screen will follow the Invoice Screen. Enter a debit/credit card to cover the participation fee.

Avoid using Internet Explorer as the pay option may not show up in the browser.

5

Make sure to continue until you can click on the "Submit" button. Then click submit.

All submission will show as "pending" until the County Extension Office can approve them. Volunteers will also need State approval.

NOTE: Contact the local Extension Office before starting a membership, to make sure you are selecting a club which fits your family needs. Adults are highly encouraged to complete an Adult Membership, if they will be assisting with 4-H activities in any way. (This includes providing transportation for 4-H events.)



YOUTH ENTERING THE 3RD GRADE MUST WAIT TO REGISTER ON SEPTEMBER 1ST!



WHAT DO YOU DO IN 4-H?

The 4-H slogan is “Learn by Doing”. 4-H members complete learning experiences called 4-H projects. A project is an area of interest that a 4-H member wants to learn more about. Each project consists of at least six hours of learning time and provides hands-on, in-depth learning experiences for members.

A 4-H member may participate in one or more project each year. Below is a *partial* list of 4-H projects to choose from:

Photography	Beef
Dog Care	Meat Goats
Citizenship	Sheep
Food and Nutrition	Swine
Clothing & Textiles	Rabbits
Public Speaking	Horse
Horticulture	Recreation
Consumer & Financial Education	Horse & Livestock Judging
Poultry	Quiz Bowls (Beef, Horse, & Nutrition)

Just about any subject can be tailored into a self-determined 4-H project if your club doesn't have a leader for your interests.

Another way to participate in 4-H is by attending club meetings. These club meetings are conducted by 4-H'ers who have been elected into officer positions. 4-H adult volunteer leaders help 4-H members plan and run the meetings. Each club has an adult volunteer leader who acts as club manager. The 4-H club manager oversees the meetings and activities of his or her respective club

4-H offers its members many fun activities to participate in. In addition to attending club meetings and completing projects, you might also enjoy making presentations, performing skits, and leadership and community service activities. There are also opportunities to participate in 4-H camps, retreats, exhibition shows and contest.

WHAT IS A 4-H PROJECT?

The project is the heart of the 4-H program. A wide variety of projects are available for members. Project opportunities vary depending upon the county and club.

Through well-chosen projects, members learn to use their resources, to assume responsibility and to acquire the knowledge and skills necessary for everyday living. A project may extend over a short period of time or for several years. “Learn-by-doing” is the most important aspect of a project, not time. Making, growing, caring for, observing and participating – these entire active learning processes are involved in 4-H projects.

From a member's viewpoint, projects may be fun, help develop skills, offer an opportunity to assume responsibility, to make a profit, save money or explore interests and careers. Projects also offer a chance to do things with friends.

Leaders and parents may see the project as a means to create more interest in daily tasks, strengthen family and

community ties, develop knowledge and skills of members, explore possible career opportunities, enhance positive self-concept, develop the ability to organize, plan and make decisions.

THE PROJECT GROUP: Members would have the opportunity to participate in group learning and peer teaching since sharing skills and experiences often provides them with greater learning opportunities. Group participation can also motivate members to follow through with commitments. Members are usually involved in group learning through their participation in a project group.

Project group meetings (4-H classroom setting) are where members acquire subject-matter, knowledge and skills, and general life skills. 4-H projects are required to have six educational experiences so that 4-H members can develop their knowledge and skills.

Most clubs will have several project groups to offer. If there are five or less members enrolled in a project, the club may decide not to offer that project. Parents will be expected at this time to help the 4-H member select another project. In some cases projects are available on a countywide level (i.e. shooting sports, photography, dog, etc.). Project leaders for county wide events are responsible for announcing meeting dates, times and places in the county 4-H newsletter.

HOW ARE PROJECTS CONDUCTED? Projects are conducted through various activities and events such as:

- A. Project group meetings (4-Her should have a least 6 learning experiences)
- B. Regular club meetings (project talks, educational presentations, etc.)
- C. Tours or field trips to visit projects of members, local businesses, or various agencies
- D. Family activity at home
- E. Exhibiting project work
- F. Individual work toward project goals
- G. Record keeping of project activities

THOUGHTS TO CONSIDER WHEN CHOOSING A 4-H PROJECT

- Select a project you like or have interest in learning about.
- Select a project that can be completed.
- Consider the money it will take. Can parents / guardians help?
- Consider the space and equipment that you have at home.
- Consider parental support for the project.
- Be aware of the opportunities for growth in this project.
- A 4-H project should be fun, serve a purpose, and be worth the effort.
- Select only the number of projects you can complete.

POPULAR PROJECTS IN YOUNG COUNTY

Horse
Goat
Sheep
Fashion & Interior Design
Public Speaking
Quiz Bowls
Robotics*

Swine
Rabbits
Shooting Sports
Horse & Livestock Judging
Photography/Videography
Sports Fishing*
Small Engine

Beef
Rocketry*
Food & Nutrition
Leadership
Consumer Education
Outdoor Education*
Theatre & Performing Arts*

*New projects to be explored in 2019

4-H CLUB MEETINGS

WHAT IS A 4-H CLUB? These are the traditional clubs that have been, and will continue to be, the basic unit and foundation of the 4-H program. Clubs may be organized in a project basis or on a community basis. In a **PROJECT** club, all members are on the same project area together. A **COMMUNITY** club includes a larger number of members of various ages who work on a variety of projects.

CLUB LEADERSHIP TEAM

CLUB MANAGER

- Manages executive committee meeting, monthly club meetings and club organization.
- Promotes cooperation, coordination and communication.
- Trains and supervises officers and committees.
- Informs parents and involves them in 4-H.
- Plans and publishes yearly club program.
- Helps recruit leaders and members.
- Provides recognition for members and leaders.
- Publicizes 4-H in community.
- Keeps records and supplies.

ACTIVITY LEADERS

- Organizes and teaches in areas that are not considered projects
 1. Livestock judging (part of Beef project)
 2. Share the Fun (part of Recreation project)
 3. Method demonstrations (learning experience for any project)
- Helps 4-H members organize and conduct special activities.
 1. Special community service project
 2. Club food show (part of Foods & Nutrition project)
 3. National 4-H Week activities
 4. Field Trip

AMBASSADOR

- Serves as a resource to a club
- Teaches a project to younger member(s)
- Conducts community service projects
- Conducts 4-H promotion activities
- Role model for other youth

PROJECT LEADER

- Organizes and conducts project group meetings and activities
- Helps members select and manage project
- Assists members with record keeping
- Conducts home visits and individual conferences
- Provides opportunities for other 4-H participation
- Involves older members as junior and teen leaders
- Recognizes members
- Encourages parental interest and support
- Coordinates with other leaders
- Responsible for notifying project members of meetings, either by phone or monthly newsletter.

JUNIOR AND TEEN LEADERS

- Help plan 4-H activities
- Teach younger or newer members
- Recruit members and leaders
- Call members and encourage participation
- Lead by example

PARENTS

- Help secure finances and facilities for projects
- Help members select and conduct project
- Help with daily care and management of project
- Responsible for members arriving to and attending meetings and activities
- Help member keep records of projects
- Help with some aspect of 4-H program
- Maintain good communication skills with club manager, stay involved and well informed with what the club is doing at all time.

YOUNG COUNTY 4-H YOUTH COUNCIL

Members of the Young County 4-H Council plan and coordinate 4-H activities in the county. The Young County 4-H Council also promotes county, district and state level 4-H activities.

County Council is comprised of 4-H members from each of the various 4-H clubs in the County. Clubs are encouraged to have two to three council delegates who will attend the County 4-H Council meetings. Typically, a 4-H member is elected into the position of council delegate and represents his or her club at the County 4-H Council meetings. In most cases, the President of the 4-H club also serves as a delegate to the County 4-H Council. In addition to the club council delegates and presidents, membership to the council is open to all 4-H'ers of Young County.

The Young County 4-H Council serves as a communication channel. Council delegates represent their club and relay information and ideas from their club to the council. The council delegates also relay information from the council to their club to keep the members up to date on county-side activities and events.

Meetings of the Young County 4-H Council are held every other month during the school year at 6:00 pm at the Young County Extension Office in Graham.

4-H RECORD BOOKS

Each 4-H member must keep a record of his or her 4-H work. Records are not an extra task, but are a part of 4-H work. Few young people (adults are no exception) enjoy record keeping. However, it is an important life skill.

Why encourage 4-Hers to keep good records?

1. A 4-H record teaches a desirable habit. Modern day society demands that each and every one, no matter what vocation, keep track of financial and business matters. Developing this habit early in life will be a valuable asset.
2. A 4-H record is a measuring stick. Members and leaders are kept informed of the member's progress and will usually stimulate self-improvement by the member.
3. A 4-H record is a mirror. It will reflect accomplishments and therefore serve as the basis for awards, trips and other recognition.
4. A 4-H record provides youth with a time for reflection about who they are, what their goals are, what they have accomplished in the past year, etc.
5. A 4-H record can be achieved only when there is the proper attitude and cooperation between member, parents and leaders.
6. 4-Hers learn:
 - ☛ to communicate in writing
 - ☛ to organize thoughts
 - ☛ to set goals and work toward these goals
 - ☛ to make short- and long-term plans
 - ☛ to evaluate a record of growth from year to year
 - ☛ to recognize skills learned, goals accomplished and successes they've had
7. Information required to complete a record book is available at your county Extension office.
8. Due June in of each year.
9. Required to receive some awards at 4-H Banquet.
10. Required to receive top county awards at the 4-H Banquet.
11. On-line tutorial resources are coming after Oct. 15, 2017

Texas Record Book Program

This section includes information for the Awards Program Record Book. Refer to the section marked Award Program Objectives in the "Clover" for the project objectives that youth should meet. There may be changes for the 4-H record books, so look for them after October 15, 2018.

Program Record Book Guidelines

Senior Division: 4-H member must have passed their 14th birthday, but not their 19th birthday, on August 31st of the year in which they are entering a record book. At the state level, a 4-H member can submit only one awards program record book. Senior 4-H members who place first at district are eligible to submit a 4-H record book for state judging with the following exception:

- * Youth who have placed first in one of the awards program categories in any previous year.
- * First place winners in each of the categories will be awarded an educational experience scholarship towards a trip to Washington D.C. during the Thanksgiving weekend.

Junior & Intermediate Division: Any 4-H member too young to enter a senior 4-H awards program will be eligible for the junior and intermediate division as offered on the county and district level.

Preparing 4-H Awards Program Record Books

Important Details:

- There will be three (3) levels of record books based on 4-H age (junior, intermediate, and senior). Information requested for each level will progressively add on to each other. The junior & intermediate books will be significantly simplified from the current record book. The senior level book will be similar to the current record book with some minor edits.
- Parts of the report form will be standardized to allow for ease of completion and judging.
- Much of the data from previous record books that a member may have saved on their home computer may be ‘cut and pasted’ into the new forms.
 - All 4-H members (juniors, intermediates, and seniors) will begin using the record book information found at the Texas 4-H website (<https://texas4-h.tamu.edu/recordbooks/>).
- Record books will still be printed and turned in (in hardcopy form) to be judged by the deadline set by your local County Extension Office.
- With the 2017-2018 4-H year, reference to 4-H objectives and photo captions in the report form will no longer be required. Also a resume for Seniors will no longer be required.

Follow the guidelines outlined in the publication 4-H 3.3040, “Texas 4-H Member Record Keeping System – Guidelines and Instruction” (available through the county Ext. Office), or website at <https://texas4-h.tamu.edu/recordbooks/>.

The Record Book Program may change annually.

Refer to the current year’s Texas 4-H Record Keeping Guidelines for more information and online tutorial on preparing record books instructions or websites at <https://texas4-h.tamu.edu/recordbooks/>.

COUNTY AWARDS PROGRAM

All County awards are for the current 4-H calendar year of September 1 through August 31. All 4-H members applying for County awards must submit an awards application for the current year.

Rookie of the Year:

1. 9-18 years old (or 8 and in the 3rd grade), 3rd grade through 12th grade, and a **first** year 4-H member.
2. Application form (See application – Appendix I).
3. Record Book for the current year (optional).
4. Selection process based on:
 - a. Project involvement
 - b. Club involvement
 - c. Leadership
 - d. Community service
 - e. Club attendance
5. Judged by a panel from out of the county.
6. Face to face interview

Bronze Star:

1. All Junior members in grades 3-5.
2. Application form-first page only. (See application – Appendix I).
3. Record Book for current year.
4. Selection process based on:
 - a. Project involvement
 - b. Club involvement
 - c. Leadership
 - d. Community service
 - e. Club attendance
5. Judged by a panel from out of the county.
6. Face to face interview

Silver Star:

1. All Intermediate members in grades 6-8.
2. Application form-first page only. (See application – Appendix I).
3. Record Book for current year.
4. Selection process based on:
 - a. Project involvement
 - b. Club involvement
 - c. Leadership
 - d. Community service
 - e. Club attendance
5. Judged by a panel from out of the county.
6. Face to face interview

Gold Star Requirements

The Gold Star Award is the highest county achievement award and intended to be received only once in a member's 4-H career. Counties have award quotas based on the number of senior 4-H members. The award will be presented to the most deserving young people without regard to sex. The following requirements must be met.

1. The member must be at least 15 years of age as of September 1 of the current year and must have completed at least 3 years in 4-H including the current year.
2. The 4-H member must submit an awards program record book in the year he/she is to be considered for the awards.
3. The 4-H member must submit, along with their record book, the first page of the application form and have a face-to-face interview with a panel of judges from out of the county.
4. The 4-H member must have completed projects in three different project areas, including sub-mission of appropriate record forms, and have participated in one or more activities in at least three of the following areas:

Method Demonstration / 4-H Presentation

Projects

Camps

Citizenship Activities

Contests

Project Exhibits

Leadership Labs

Public Relations (demonstrations, speeches, poster displays, radio, TV, newspapers, etc.)

Other (included exchange programs, fund-raising, State and National Congress, etc.)

Note: It is not expected that the requirements for projects and activities all be completed in the current year. They may have been accomplished over the entire period of time the 4-Her has been in the program.

During his/her years in 4-H, the member must have exhibited leadership skills by serving as a 4-H officer or committee chairman (club, county, district or state), and/or as a junior or teen leader in an activity or project with or under the supervision of an adult volunteer leader. The 4-H member must have participated in one of more community service activities. Examples are working or counseling with junior 4-H members; participating in community service projects (individual, group or club-type); and motivating other 4-H members through participation in demonstrations, project and/or exhibits.

4-H CONTESTS

There are a variety of 4-H contests which offer members a chance to showcase their skills. Many of these contests are offered at the county, district and state level. Contest information is included in the county 4-H newsletter. Below are brief descriptions of some of the annual contests. For contest dates, refer to the 4-H calendar included in your county 4-H newsletter. Please note that all contest dates, times and locations are subject to change. Notification of changes will be printed in the county 4-H newsletter.

4-H ROUNDUP

4-H Roundup provides 4-H members a chance to demonstrate and practice their public speaking skills. 4-H members use the knowledge they gain from their 4-H projects and activities to prepare presentations, which are a valuable educational part of the 4-H program.

Educational Presentations are planned presentations by one or more 4-H members, designed to teach information related to a project or activity. Visual aids including slides, posters, charts, pictures, and models may be used in the educational presentations. 4-H'ers may present educational presentations individually or in teams up to five. In addition to educational presentations, 4-H Roundup offers **PUBLIC SPEAKING**. Individuals present a 5 to 7 minute talk suitable as a platform speech or radio broadcast. Props and visual aids are not permitted and recordings of any type may not be used.

Share-the-Fun Skits are other competitions that are part of 4-H Roundup. In these skits all 4-H members discover and fine-tune their acting and showmanship talents. There are seven divisions within Share-the-Fun.

- Dramey
- Poetry/Prose
- Vocal
- Solo/Band
- Choreographed Routines
- Celebrate 4-H
- Musical/Instrumental

BEEF QUIZ BOWL

The Beef Quiz Bowl is a team trivia contest that tests 4-H'ers knowledge about beef cattle and beef cattle industry. 4-H'ers compete in Beef Bowl teams of four. The Beef Bowl is structured as a trivia contest complete with a moderator and buzzers for each contestant. The District Beef Quiz Bowl is usually held in the Spring and the State Beef Quiz Bowl is held at State 4-H Roundup in June.

CONSUMER DECISION MAKING

Consumer decision making is a team contest where 4-H'ers must evaluate goods and decide upon the best product for a given scenario. 4-H'ers will gain knowledge in the area of price, quality and product evaluation.

FASHION SHOW

The Fashion Show provides opportunities for 4-H members to demonstrate what they have learned about good grooming, poise, fashion interpretation, and understanding of style. Clothing and Textiles participants may choose to concentrate on clothing construction or buying. They will have the opportunity to model these garments at the Young County 4-H Fashion Show in the Spring. The District Fashion Show is held in April and the State 4-H Fashion Show is in June.

DUDS TO DAZZLE

The Texas 4-H Duds to Dazzle Clothing & Textiles Competition utilizes the knowledge and skills learned in the project, while increasing awareness of the impact of the clothing & textiles industry on the environment, specifically the waste stream. Teams of 4-H members will re-design and repurpose discarded garments.

FOOD CHALLENGE

Modeled after such competitions as the Food Network's Iron Chef, the 4-H Food Challenge allows teams of 4-H members to create a dish using only a predetermined amount of ingredients. From these ingredients, 4-H members must identify, prepare and then present information related to the serving size, nutritional value, and cost of the dish. Through out of this energized process, the 4-H members are demonstrating their culinary and food safety skills to judges and on-lookers.

FOOD SHOW

The Food Show allows 4-H members an opportunity to practice skills and share knowledge acquired through the Foods and Nutrition project. There are four categories in which to compete: Protein, Grains, Fruit & Vegetable and Dairy. The Young County Food Show is held in October, the District 3 Food Show is held in November, and the State 4-H Food Show is in June.

HORSE SHOW

4-H members can show off their horsemanship skills while participating in the 4-H Horse Show. 4-H horses must be owned by May 1st of the current 4-H year. There is also a futurity project that you can participate in as well. The Young County 4-H Horse Show will be held in May, the District 4-H Horse Show is held in June, and the State 4-H Horse Show is held in July.

HORSE QUIZ BOWL

The Horse Quiz Bowl is a team trivia contest that tests 4-H'ers knowledge about horses and horse science. 4-H'ers compete in Horse Bowl teams of four. The Horse Bowl is structures as a trivia contest complete with a moderator and buzzers for each contestant. The District Horse Quiz Bowl is usually held in the Spring and the State Horse Quiz Bowl is held at State 4-H Roundup in June.

NUTRITION QUIZ BOWL

This is a contest with a team of four 4-H members and is conducted like a game show with buzzers. Team members are asked questions concerning nutrition and they are to buzz in when they think they have the correct answer. Each match is 25 questions plus 5 bonus questions for a total of 30 questions. Points are given for each correct answer. The contest is usually held in the fall.

JUDGING CONTEST

Also, competing as teams of three or four, are those 4-H'ers who participate in the 4-H Judging Program. Judging teams can compete in the following contests: Horse, Livestock, Meats, Range Evaluation, Plant Identification, Wool Evaluation, Mohair Evaluation, Dairy, and Soils judging. District judging contest are held during the spring and the State 4-H Judging contest are held at State 4-H Roundup in June.

YOUNG COUNTY JUNIOR LIVESTOCK SHOW

The Young County Junior Livestock Show is held annually in January and is open to all Young County 4-H and FFA members that are residents of Young County or attending a school in Young County. Contact the Extension office if you are interested in showing an animal.

YOUNG COUNTY YOUTH FAIR

The Young County Youth Fair is held annually in January the Thursday of the Young County Junior Livestock Show and is open to all Young County 4-H and FFA members that are residents of Young County or attending a school in Young County. Contact the Extension office if you are interested.

PHOTOGRAPHY CONTEST

Explore your world through the lens of a camera. The photography project allows 4-H'ers to capture moments in time of interesting objects, people, and events. This project welcomes all 4-H members who are interested in taking pictures, the only thing you need is a camera. County, district and state contests are offered through 4-H.

LIVESTOCK SKILL-A-THON contest provides opportunities for youth enrolled in 4-H to gain and develop production livestock skills, and life skills, by engaging them in a pleasant, yet competitive environment which focuses on the range of their knowledge and comprehension of animal science and livestock management practices. There are Junior, Intermediate and Senior age divisions and no registration fee for this event, but donations are being accepted to offset costs.

TEXAS 4-H & YOUTH DEVELOPMENT **OPPORTUNITY SCHOLARSHIPS**

Texas 4-H and Youth Development Program Opportunity Scholarships are awarded each year to applicants based on their 4-H experience, academic record and financial need (for scholarships for which it is a prescribed criterion). The Texas 4-H and Youth Development Opportunity Scholarship Program is conducted in coordination with the Texas 4-H and Youth Development Program, the Texas 4-H Youth Development Foundation, and Texas A&M AgriLife Extension Service.

The Texas 4-H Foundation seeks to ensure that each recipient receives the highest dollar amount of scholarship for which that recipient is eligible. For the majority of the total scholarships and scholarship funds available, participation in a livestock show is not a requirement for consideration for an Opportunity Scholarship.

The Texas 4-H Opportunity Scholarship Program provides scholarships in four different areas. Each type of scholarship has its own requirements and criteria. It is up to the applicant to make sure that he/she clearly understands the requirements and completes the application in order to be considered.

- Baccalaureate Scholarships - the traditional Texas 4-H Scholarship Program, for students who wish to pursue a Bachelor of Science (BS) or Bachelor of Arts (BA) degree.
- Technical Certification Scholarships - for students who wish to pursue technical certification offered in the eligible majors/courses of study and from an approved Texas accredited college listed in the scholarship packet.
- Collegiate Scholarships – designated for former Texas 4-H members who have graduated from high school and have completed a minimum of 30 hours of college credit at a grade point average of at least 2.7.
- Courageous Heart Scholarships – special scholarships awarded to Texas 4-H members that have overcome extreme obstacles related to medical, family, and/or education and remained an active member of both 4-H and school.

Texas Extension Education Association, Inc. Scholarship - TEEA sponsors twelve (or one per district) scholarships, each valued at \$1,000. If there are no district submissions or acceptable applicants, a district scholarship may not be given that year. For information about scholarships and important dates look at the 4-H State Website: <http://texas4-h.tamu.edu/>. As we are aware of more scholarships we will pass the information on to our 4-H members.

This information is from the Texas 4-H Clover, Opportunities Handbook for 4-H Youth, Extension Agents, Leader and Volunteers from the Texas 4-H website <http://texas4-h.tamu.edu/>.

LEADERSHIP OPPORTUNITIES

Programs at the Texas 4-H Conference Center, located in Lake Brownwood, are facilitated by the Program and Marketing Director. Information about the program offered will be sent to the county Extension office before each event. Website: <http://texas4hcenter.tamu.edu/>.

TEXAS 4-H TEEN RETREAT

This educational program focuses on the development of intensive leadership skills and targets 4-H members age 14 and older. Young people explore their own leadership styles and potential and development plans to implement at the local, county and district levels. Other programming topics include community service, "GO4It!" campaign and more. This workshop is held in January.

TEXAS 4-H RECREATION TEAM TRAINING

This program was developed to support the Recreation Project by teaching leadership skills through the medium of recreation. Counties are encouraged to bring a team of 4-Hers, age 13 and older, and a coach. Educational focus will include communication, teaching and learning styles, types of recreation, career opportunities that use recreation skills, and more. This workshop is scheduled in March.

JUNIOR LEADERSHIP RETREAT

Junior Leadership Retreat to be held at the 4-H Conference Center in Brownwood November 11-13. This state-wide leadership development program is for all 4-H members under the age of 14. It's for the intermediate and junior 4-H member who wants to begin building that network of friends and associates while enhancing their leadership skills. All of the workshops are facilitated by members of the Texas 4-H Council, making this a true "youth teaching youth" program. Workshops this November will focus on leadership skills and new 4-H project opportunities such as Food Challenge, Outdoor Challenge and Inclusion. Team building and communication workshops are always a part of the Junior Leadership Retreat experience.

BRIGADE CAMPS

There are brigade camps usually during the summer such as the Bob White Brigade Camp. Some Young County 4-Hers have been in the past and if you are interested call our office as soon as school is over.

TECHNOLOGY CAMP

Technology Camp recognizes that not everyone loves the great outdoors. There are lots of youth who want to learn more about videography, web design, digital photography, GIS and DPS and robotics. If that's you, additional information will be posted on the 4-H Center website as it becomes available.

SHOOTING SPORTS CAMP

This camp is for beginner shooters, who want an opportunity to check out various disciplines. The four days, three night camp provides hands-on learning in Archery, Light Rifle, Shotgun, Muzzle Loading and Air Pistol. Participants will also complete Hunter Education Certification, Firearm Safety and a little bit on the Wildlife Habitat Evaluation Project.

MISSION POSSIBLE

Mission Possible is a unique camp for youth with and without disabilities. Our goal with this camp is to empower youth with disabilities to enjoy a traditional camp experience, and empower youth without disabilities as mentors to gain in their understanding of the disability county. 4-H youth serving as Mentors are partnered with a youth with special needs to assist them in whatever capacity is needed. This may be as simple as reminding the camper to brush their teeth and get ready for bed or helping them to bathe each evening during the preparation for lights out. Mentors receive training the day before camp and will have on-line learning modules to study before camp. Mentor applications are available on the 4-H Center website as are camper applications.

COUNTY CAMPS

Just think of County Camp as a way to bring youth of all ages to the same camp. It save you time and travel expenses. And, it's a great family activity. There are four sessions offered for County Camp, and while you do NOT have to come with a county delegation, most do. Activities at camp include archery, canoeing, swimming, riflery, environmental education, arts and crafts, challenge course activities and DANCES! First session usually has a dual program schedule. Youth ages 9-13 will follow the traditional program schedule. Youth that are 14 and older do the Teen Extreme Camp with focused activities in Outdoor Education, Outdoor Living Skills and Aquatics. It's just a "beefed up" program for the older set. Find more detailed information on the website, texas4h-ctr.tamu.edu.

PRIME TIME

Prime Time is another great camping opportunity. The program activities at Prime Time and County Camp are basically the same; however, Prime Time is age specific. Youth ages 12-13 and youth ages 9-11 camp at different times in July. There's a little wiggle room (or overlap) on both camps in regards to the ages allowed at each one. Each session of Prime Time is four days, three nights and features environmental education, canoeing, archery, arts and crafts, evening games and dorm challenges, swimming, challenge course activities and a great chance to meet youth from all over the State! Dances in the evening help build those social skills. We offer lots of line dancing so that everyone gets involved. The 4-H Center's signature dance is "The Popcorn", a tradition since the early 70's.

SPECTRA

SpecTra is a week-long camp for 4-H members 14-18 years old. The purpose of the camp is to explore career opportunities and to enhance 4-H project work. Each year the program varies, but the basics are in place. Youth choose one project area from a menu of seven or eight topics and then they are in that project the entire week. Coordinated by Texas AgriLife Extension Specialists, County Extension Agents and/or Adult Volunteers, each individual workshop features about 18 hours of instruction on that particular topic. The method of delivery may include lecture, field trips, hands-on learning and practice through service endeavors. Evening workshops focus on job preparation skills such as resume writing, etiquette, and interviewing skills. The Gala tradition continues at SpecTra. This is an opportunity for participants to experience a formal reception and banquet, decked out in semi-formal evening wear! It is quite spectacular. SpecTra is scheduled in July on odd years.

TEXAS 4-H CENTER SUMMER STAFF OPPORTUNITIES

Texas 4-H is known for the quality of youth leadership that comes from the program. These youth are valuable resources at the local, county, district and state level. The Texas 4-H Center employs a summer staff to plan, implement and evaluate programming for summer activities. Summer staff applicants are **not** required to have been 4-H members, but they must have successfully completed one year of college (this does not include college course work taken during high school). Applications for these positions are mailed to county offices by January. Interviews are conducted in February and March. All summer staff are required to participate in a 2-week intensive training session in May. Positions available are Program Assistants, Counselors, Lifeguards and an Aquatics Supervisor.

TEEN LEADER LAB

A camp, held at the Texas 4-H Center on Lake Brownwood, for senior age 4-H members that involves several educational activities and district officer elections. Activities and workshops include archery, shooting sports, team games, team-building and dances. It is designed to create and enhance leadership and responsibility. Registration normally due mid-May.

4-H M.A.S.H. CAMP

The Texas 4-H and Youth Development Program and the Texas A&M Health Science Center partnered to offer M.A.S.H. Camp. The Medical, Activity, Safety and Health Camp provides an opportunity for youth to learn about nutrition, physical activity, health and safety, as well as explore a variety of careers available in the health education field. The three-day, two-night camp will be conducted at Texas A&M University in College Station, in June. The camp is open to any youth in Texas that is in the 7th, 8th, or 9th grade. While the camp is targeting youth in rural Texas, youth from all areas of the state are welcome to participate. Membership in the Texas 4-H and Youth Development Program is NOT a requirement for participation in the camp.

BITS, BYTES & BOTS

A week-long camp focused on technology punctuated with all the fun summer camp stuff like kayaking, swimming, archery, rifle, challenge course, crafts, etc.! It's the best of both worlds.

CHEF AT CAMP

This is a week at camp, but with a twist. This one is all about food, nutrition and fun! Enrollment is limited to 40 youth, to make 8 teams of 5. You must have completed 6th grade in Spring.

PARENTS: PARTNERS on the 4-H TEAM

Good youth development programs do not just happen. It takes the combined effort of parents and volunteers along with the guidance of Extension youth development professionals to establish a good 4-H program

In 4-H we have a team . . . a 4-H team which contributes to the ultimate development of boys and girls. On this team are the parents who become partners of the team. If this team is to be successful, then the parents must become “regular players” not “bench riders.”

WHY PARENT PARTICIPATION?

Through research and experience, a number of positive effects on 4-H, 4-H clubs and 4-H members can be attributed to active parent participation.

1. Active parent participation can strengthen and broaden the 4-H program in local unit or in any county.
2. 4-H work would be totally impossible without the active support of interested parents.
3. It has been found that boys and girls do better club work when parents show interest, not only by work but also by deeds.
4. Extending a helping or encouraging hand to a boy or girl is one of the finest ways you can express affection to your children and other youth.
5. 4-H is a family affair offering parents many opportunities to participate in a program with their child and build family unity.
6. When parental support is positive, the chances are good for the club to become stronger, larger and more active.
7. In clubs where parental support is good, individual club members receive more personal attention and guidance from leaders and parents.
8. Club activities and events will develop and expand with the added support of parents.
9. 4-H has a positive influence on the lives of thousands of boys and girls. This happens only when parents care enough to share their time, efforts, and talents.

4-H BRINGS THE FAMILY TOGETHER

Closer family unity comes from planning, sharing, and working together. When a family works as a team the strengths, talents, skills, and worth of each family member can be developed and appreciated. With love and understanding, patience and counsel, a parent can offer their child a solid start in a pleasant and beneficial experience. The family then becomes a team.

WHAT CAN PARENTS DO TO SUPPORT AND/OR HELP IN THE 4-H PROGRAM?

1. Learn what 4-H is all about (purposes, objectives, etc.).
2. Exhibit a genuine interest and enthusiasm in 4H and in your child.
3. Encourage participation in 4-H activities. Participation stimulates interest and enthusiasm.
4. Assist your child in selecting a project they will enjoy, a project they have the ability to accomplish, and one for which you can help furnish facilities, financing, needed materials and guidance.
5. Provide encouragement. Help in project work with record keeping, demonstrations, judging, and completion of attempted work and leadership responsibilities.
6. Provide transportation for members to local club meetings, county events and various activities.
7. Attend at least half of the club meetings each year with your child.
8. Get informed about “what’s going on” and continue to keep informed.

9. Provide a meeting place for a project group. When possible, assist leaders and club by providing refreshments or other help.
10. Volunteer to be a project leader. All adults have abilities that would greatly assist the 4-H program.
11. Serve on a committee to help plan and conduct special club activities and events.

IMPORTANCE TO THE 4-H PARENT

Participation in the 4-H program can give the parent a feeling of contributing to their community, a feeling of being helpful to young people, and a feeling of value and worth. There is some credibility to the saying that 4-H develops both youth and adults.

4-H can provide an extended family, a network of positive adult and older teen role models to help provide a positive environment in which their child can grow and develop.

Young County 4-H **Parent Leaders Association**

All 4-H parents and leaders are encouraged to become part of the Parent Leaders Association.

- This association is composed of volunteer 4-H leaders who meet and work together to support the youth of Young County.
- The Parent Leaders Association works in conjunction with the County 4-H Council to plan and coordinate county-wide 4-H activities. The Parent Leaders Association works to financially assist the 4-H youth through fund raising projects. The Association is also useful as a meeting forum in which leaders may exchange ideas.
- Meetings of the Young County 4-H Parent Leaders Association are held every month during the school year at 6:00 pm at the North Central Texas College.

How to Be a 4-H Volunteer

A person 18 years or older may serve as a volunteer; however, in order to serve as an adult overnight chaperone, a volunteer must be at least 21 years of age at the time of a 4-H event. To serve as a volunteer, one must apply by setting up a profile and completing a volunteer application online via 4-H CONNECT. All 4-H volunteers must be screened through the Youth Protection Standards Program, which includes a criminal background check. Based upon each individual's role as a volunteer, additional requirements may exist, such as completion of a Child Protection Training. Upon acceptance as a 4-H volunteer, volunteers should consult with the County Extension Agent to find a position that meets their interests and the needs of the county 4-H program.

4-H Volunteer Application Fee 4-H volunteers will be assessed a volunteer application fee in the amount of \$10 per year. This fee will be assessed annually when a 4-H volunteer creates or reactivates his/her profile in 4-H CONNECT. The application fee will cover the cost of volunteer screening and expedite the screening process when paid by credit card.

Credit Card Payment Option Available for 4-H Volunteers 4-H volunteers now have the opportunity to pay the annual volunteer application fee by credit card or check. Please note that counties can select the payment options available in 4-H CONNECT. Therefore, counties can choose not to offer volunteers the option to pay by credit card. If so, the County Extension Office will continue with the current process of submitting volunteers with a check payment for the annual \$10 volunteer application fee but, the process will take longer to be approved.

Application Processing Screening of volunteers is not conducted until credit cards have been processed (4-H volunteers) or check payment has been received (4-H and non-4-H volunteers) in the Texas 4-H YPS Office. Volunteer applications are processed for screening on a weekly basis in the Texas 4-H YPS Office.

Re-activating 4-H CONNECT Profiles When volunteers enroll for the new 4-H year, it is important they re-activate their profile on 4-H CONNECT and ***NOT*** create a new profile. If a new profile is created, the volunteer screening information will not transfer to the new profile. Therefore, the system will indicate the volunteer needs to be screened.

Screening Overview

A. Who is screened?

1. All direct volunteers who work with youth and adults should be screened through the Youth Protection Standards Program. See Attachment VI.
2. Initial screening of a volunteer is conducted when he/she applies for a volunteer role with the Texas A&M AgriLife Extension Service. Volunteers must be screened prior to fulfilling any volunteer roles.
3. Re-screening of all Extension volunteers is conducted every year from the \$10.00 volunteer fee.

B. Who is a direct volunteer?

1. A direct volunteer is any adult who meets the following criteria:
 - a. Provides unpaid support for Extension through face-to-face contact;
 - b. Provides a learning experience for adults or youth within Extension;
 - c. Has an individual volunteer application on file with the appropriate program area;
 - d. Has a position description on file; and
 - e. Has passed a criminal background check within the past three years.
 - f. ***Note:*** 4-H volunteers must also pay the annual volunteer application fee (\$10) and complete required trainings on 4-H CONNECT prior to being accepted.
2. Master volunteers are also considered to be direct volunteers.

C. Are overnight or driving chaperones screened? Yes! Individuals who are driving youth or chaperoning youth for overnight events are considered direct volunteers and must be screened and cleared through the Youth Protection Standards Program prior to serving as a volunteer.

Examples: Texas 4-H Roundup Chaperone, a driver to Texas Teen Retreat, helping lead a workshop at Texas 4-H SpecTra, 4-H Club Manager, Livestock Mentor, 4-H project leader, Master Volunteer, or Shooting Sports Leader, etc.

D. What kind of criminal background check is conducted?

1. A national criminal background check is conducted through the Volunteer Center of North Texas. This is a nonprofit group designated through legislation that all state agencies with volunteers must use to conduct background searches.
2. The criminal background check consists of a Texas DPS records search, a national search of forty-eight (48) jurisdictions and state and national sex offender lists.

E. Is screening conducted by other entities accepted by Extension?

1. Volunteers may document a prior criminal background check from another entity on the volunteer application or when enrolling in 4-H CONNECT.
2. Extension will only accept screenings performed by entities on the approved list. The minimum requirement is a criminal background check conducted through DPS or a national criminal search entity.
3. Documentation of screening by other entities is required.
 - a. Documentation may include a letter of acceptance from the employer or volunteer group, a letter written from the screening entity to Extension stating the volunteer has been screened and passed, or a copy of the volunteer card or credentials.

Note: A volunteer will not be approved to serve as a volunteer until documentation of a previous screening by another entity has been provided, reviewed, and accepted by the Texas 4-H YPS Office.

- b. A copy of the letter stating the volunteer has been screened by another approved entity should be forwarded to the Texas 4-H YPS Office, with a copy also maintained in the county office. These files will be permanently maintained in the Texas 4-H YPS Office.
 - c. Master Volunteers: A volunteer who completes a volunteer application, and submits a letter of screening from an approved entity and, therefore, does not need to be screened through PS, does not need to submit \$10.
 - d. A volunteer who completes a volunteer application, or enrolls online, and submits a letter of screening from an approved entity and, therefore, does not need to be screened through YPS, does not need to submit \$10.
 - e. If a volunteer claims prior screening, but it is not from an approved entity, he/she must be screened through the Youth Protection Standards Program.
4. Although volunteers may have been screened and passed a criminal background check through an approved entity, it is Extension's policy that volunteers be screened every year, no matter the entity.
- Example:** A volunteer who passed a criminal background check when he/she began volunteering with a church in 2009, but has not been re-screened since the initial screening, must be re-screened through the YPS Program or provide proof of a more recent screening.

Contact the Young County Extension Office for more information.

4-H ANIMAL PROJECT CALENDAR

4-H livestock projects are a tool used to create responsible, caring and determined young people. We can assist in project selection, feeding, proper maintenance, exhibition and preparation. Below is a general calendar of dates to assist you with majority of livestock projects. The 4-H year begins September 1.

July-September	Locate market sheep, goat and swine project for major shows (Fort Worth, San Antonio, Houston, etc.)
August	Order Lamb/Goat tags for major shows
September	State Fair of Texas begins Order swine tags for major shows Notify office of Calf Scramble participation intentions
October	Registration/Validation deadline for ownership of heifers State Fair continues One Day 4-H Community Service Project Heart of Texas Fair & Rodeo, Waco Major show lamb and market goat validation Horse & Beef Quiz Bowls
November	District Livestock Judging State Swine validation Entries due for major shows (Fort Worth, San Antonio, Houston, etc.) State Rabbit Show
December	1 st – Validation deadline for market goats, lambs, swine and all breeding animals besides heifers not already state validated 2 nd – Entries due for County Livestock Show, Youth Fair & Photography Show District Livestock Skill-a-thon Project preparation for major shows Rabbit validation for CCJLS
January	Young County Junior Livestock Show Southwestern Exposition & Livestock Show
February	San Antonio Livestock Exposition San Angelo Livestock Show
March	Locate steers for next year's major shows Houston Livestock Show & Rodeo
April	Order major show steer tags District Horse Judging District Plant ID and Soil Judging District Rifle & Pistol Contest District Livestock Judging District Roundup & Share the Fun Deadline for horse validation

May	State Horse Validation Young County Horse Show
June	Major show steer validation State Roundup & Share the Fun District Horse Show Validation for State Fair lambs, goats and pigs
July	Maintain projects District Record Book Judging State Horse Show
August	State Fair of Texas Entries due to County Office Order lamb and goat tags for major shows Maintain projects

This will give you a reference sheet. It is not at all inclusive to all dates. A more specific list is in Appendix V. If you have further questions, contact the Extension office.

ALL DATES ARE SUBJECT TO CHANGE

FAMILY & CONSUMER SCIENCE and OTHER PROJECTS CALENDAR

September	Re-organize County 4-H Clubs Project preparation for Food Show & Food Challenge Project preparation for Nutrition Quiz Bowl
October	National 4-H Week One Day 4-H program County 4-H Food Show District Nutrition Quiz Bowl
November	District Food Show District 4-H Food Challenge
December	Prepare 4-H Scholarship forms District Leaders 4 Life
January	County Youth Fair 4-H Scholarships review Project preparation for County 4-H Fashion Show
February	4-H Scholarships due at District Level Project preparation for District Roundup & Share the Fun Project preparation for District Consumer Decision Making Contest
March	County 4-H Fashion Show
April	District Fashion Show, Storyboard & Duds to Dazzle District Roundup, Share the Fun & Consumer Decision Making District Photography Contest
May	4-H Medals & Special Awards Form due Elect 4-H Officers – Clubs and Council Project preparation for State Roundup & Share the Fun Plan 4-H Camp activities
June	State Roundup Prepare project Record Books Teen Leader Lab County Record Book Judging District Horse Show
July	District Record Book Judging Recruit new 4-H Members Prepare for Awards Banquet
August	Awards Banquet State Record Book Judging Officer/Leader Retreat

Prepare for the new 4-H year

This will give you a reference sheet. It is not at all inclusive to all dates. A more specific list is in Appendix V. If you have further questions, contact the Extension office.

SCHOOL ABSENCES & PARTICIPATION **IN 4-H COMPETITIVE ACTIVITIES**

For 4-H Members to participate in any 4-H event or Activity that would require them to be absent from school

4-H has been recognized by the Texas Education Agency as a legitimate school-related extracurricular organization. 4-H members may apply for excused absences in order to participate in 4-H activities. **It is the responsibility of the local school district to determine whether or not any student is eligible and may be excused from classes to participate in any extracurricular event or activity.** 4-H members are not automatically excused upon request, but are subject to all regulations of the Texas Education Agency and their local school district as they may apply to extracurricular participation.

Additionally, specific events and activities may require that rules be established beyond being a 4-H member. When this is the case, the responsibility for establishing and monitoring such rules rests with the organizational group in charge of the event or activity. Such rules, once made, should be made known to all 4-H members and their families. The rules must not violate the rights, or discriminate against the rights, of any person and should be so stated as to be inclusive in nature.

At the beginning of each school year, Extension agents should meet with school officials to determine the preferred steps for securing excused absences and permission for 4-H members to participate in 4-H activities.

All 4-H youth, including youth in public, private, or home school must adhere to the following guidelines regarding competitive activities:

- A. Complete a “Declaration of Eligibility Form” available on the Texas 4-H Website (<http://texas4-h.tamu.edu>) with appropriate signatures as indicated on the form (Appendix IV). Please work with the Young County Extension Office as these forms are sent to the school district from our office.

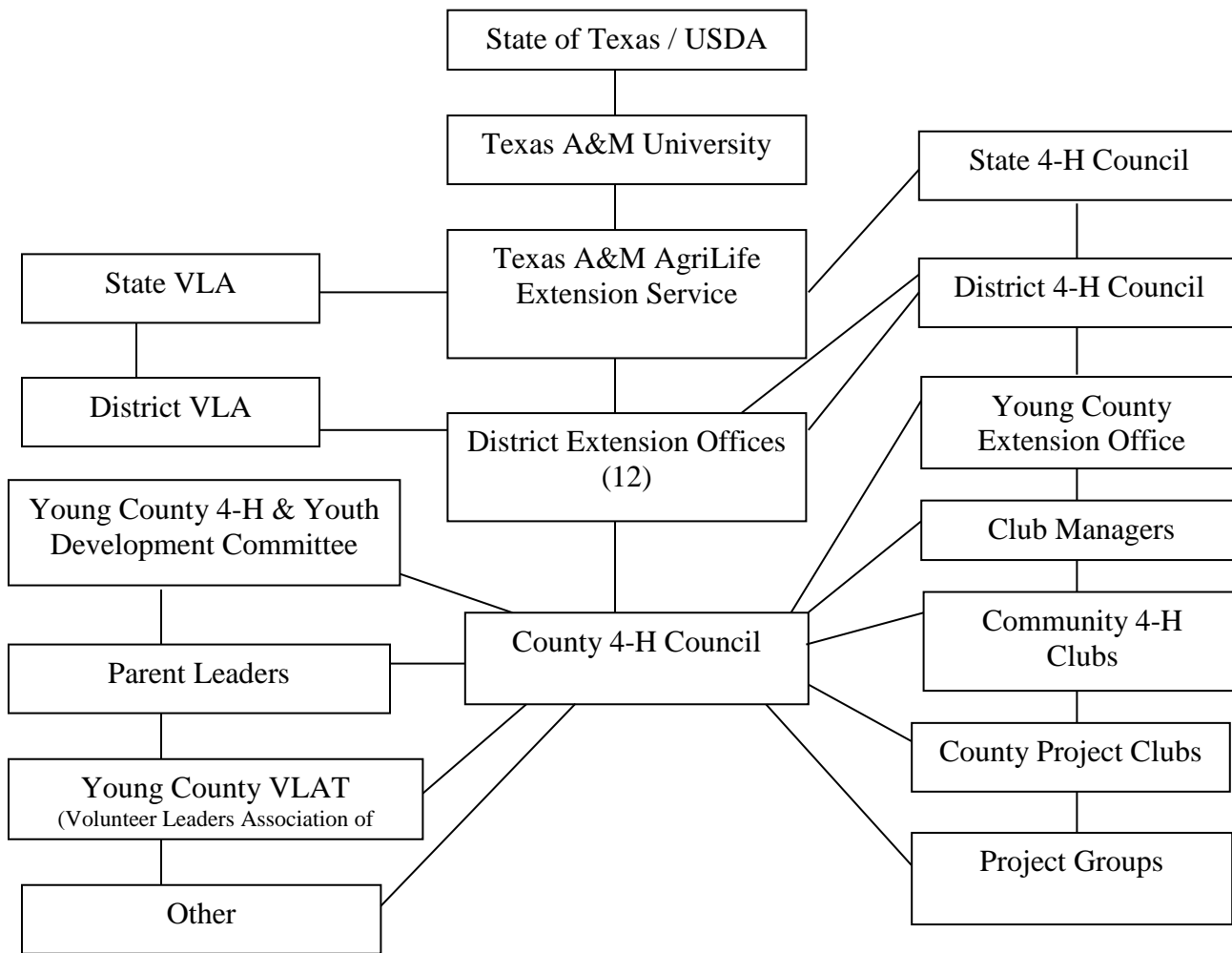
OR

- B. Name of 4-H member must appear on a list of eligible students to participate in a specific extracurricular activity signed by the school principal or designee. Recommended procedures to obtain this list are:
 - a. At least thirty (30) days in advance of each 4-H event, agents should submit a written request to the appropriate school administrator providing the following information:
 - i. Name(s) of 4-H member(s) involved
 - ii. School they attend
 - iii. Date(s) of extracurricular activity
 - iv. Name and time of event in which 4-H member(s) will participate
 - v. The educational significance of the event
 - vi. Name of adult chaperone(s)

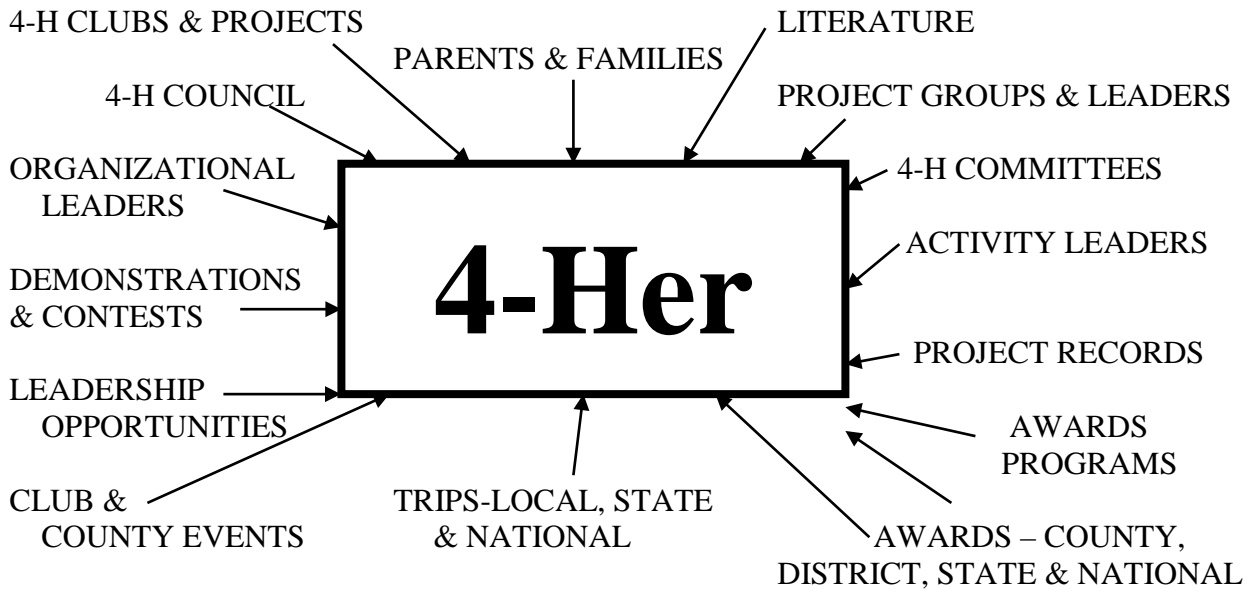
Consistent with University Interscholastic League (U.I.L.) rules, the Texas 4-H Youth Development Program has adopted a three (3) school-week waiting period upon change in status of school enrollment (i.e. from public to private or private to home or home to public or home to private, or public to public) before the 4-H member is eligible for extracurricular activity.

County Extension staff is encouraged to seek adjunct faculty status to strengthen collaborative partnerships with schools. Schools may require proof of a criminal background check for AgriLife employees. It is a reasonable request for them to accept the Agency’s screening results of each employee. County Extension Agents should make a request for a letter stating that they have passed a criminal background check to the Chief Human Resources Officer.

4-H PROGRAM STRUCTURE



4-H PROGRAM IMPACTS



MOST FREQUENTLY ASKED 4-H QUESTIONS!

Q. How can I join 4-H?

A. Anyone, regardless of race, color, religion, sex, national origin, age, disability, genetic information or veteran status may join 4-H. All you have to do to join is attend a regular 4-H club meeting, complete a 4-H enrollment form, enroll through 4-H CONNECT at 4hOnline.com, and pay a \$20.00 fee per youth. After Nov. 1 the fee will be \$25.00.

Q. What are the age requirements for 4-H?

A. anyone between the **third grade through the twelfth grade** of the current year may be enrolled as a “traditional” 4-H member. 4-H Clover Kids are for young people from Kindergarten to the second grade. **See Clover Kid definition in Glossary.**

Q. What are the residency requirements for 4-H?

A. A member can only be enrolled in one county. A member may participate in a regular project in a county they are not a member of if their “home” county does not offer that project.

Q. What does it cost to join 4-H?

A. The 4-H Program is partially funded through tax dollars. There is a \$20.00 fee for each member. After October 31 the fee goes up to \$25.00. Clubs may ask for a donation for members annually to help cover mailings, refreshments, etc. Individual projects chosen by 4-H members may have costs that the member will incur.

Q. Do I have to show an animal to be in 4-H?

A. 4-H offers many projects including animals, but a member **does not** have to own an animal to be in 4-H.

Q. What are the residency requirements for participation in the Young County Junior Livestock Show and Youth Fair in January?

A. To participate in the January show, a member must live in Young County or attend a school in Young County. You must also be a 4-H member by November 1.

Q. Where is the closest 4-H club to me?

A. There is a guide that lists all 4-H club meeting locations, leaders and phone numbers in Young County (Appendix III). This information is also in the 4-H bi-monthly newsletters.

Q. Do I have to get out of 4-H when I become a FFA member?

A. No, you can be enrolled and involved in both 4-H and FFA. Extension and FFA Advisors encourage joint participation.

Q. Why should I join 4-H?

A. 4-H is an organization that provides projects that interest nearly every young person. Your amount of involvement is your decision.

4-H GLOSSARY

Awards Banquet – This is an annual event to recognize outstanding 4-Hers and volunteer leaders for their accomplishments and hard work. (Annually during August)

Awards Application – This is a short summary of 4-H members' activities that must be turned in June of each year. It must be completed to be eligible for county awards (Appendix I) .

Clover Kids – These are young people that are in Kindergarten to the second grade who enroll in the 4-H program but are not engaged in competitive events. Examples include district events, livestock show, record books, and local competition. Clover Kids can participate in the Young County Youth Fair, but are not allowed to compete for placing.

Club Manager – Adults who give leadership to overall management and organization of the 4-H club and serves as representative to the County Extension Office.

Club Officers – 4-Hers are elected annually by the club membership. Officers have the responsibility of planning, implementing and evaluation of all club meetings.

Community Service – This is an activity conducted by 4-H members to make the community a better place in which to live.

County 4-H Council – Members composed of representatives from each organized 4-H club; organizes and plans county 4-H youth activities. (Meets every other month in conjunction with Adult Leaders Committee)

County Extension Agent(s) – Agents are responsible for managing overall 4-H program in their respective county. They are employees of the Texas A&M AgriLife Extension Service.

Countywide projects – These projects are offered on a countywide basis for members of all clubs (i.e. shooting sports and horse) and announced through the Young County 4-H newsletter and through email.

District 3 – Our 4-H District encompasses 24 Rolling Plains counties. The district headquarters is in Vernon, Texas. The local county extension agents work under supervision of district extension directors who office in Vernon.

4-H Ambassadors – This is a select group of 4-Hers who receive intense training to represent and interpret the 4-H program to the public in a certain project.

4-H CONNECT – The website that youth and adults use to enroll in 4-H and register in some events.

4-H Member – There are three levels of traditional membership in the 4-H program. All are based upon age as of August 31 of the current 4-H year.

Junior member –third through 5th grades.

Intermediate member – 6th through 8th grades.

Senior member – 9th through 12th grades. Only group allowed to compete above District level.

4-H Newsletter – Young County 4-H News – This is a by-monthly publication when postage is available; highlights 4-H events, activities and opportunities. One copy is mailed and/or emailed to each 4-H family. Updated addresses are required to have continuous delivery of the newsletter.

4-H Year – The current 4-H year begins September 1 and ends August 31 of the following year. All enrollment forms **HAVE** to be completed on an annual basis. 4-H works on a zero-based enrollment. Every member **MUST** complete an enrollment form each year.

Friend of 4-H – awards presented during the annual 4-H banquet in August.

Gold Star, I Dare You, Silver Star, Bronze Star, and Rookie of the Year – These are awards presented at the 4-H Awards Banquet to 4-H members (see awards criteria).

National 4-H Week – This is celebrated the first full week on October at which time 4-H members review their accomplishments and future goals. 4-Hers tell other young people and adults about 4-H and invite them to participate.

Opportunities Handbook (4-H Clover) – A State publication made available on the internet annually that highlights scholarships, record book award programs and every other 4-H opportunities on the state and national level.

CCJLSA – Young County Junior Livestock Show Association – An organization that sponsors and carries out “County Livestock Show” held in January annually. This organization makes and carries out their own rules. **(Complete rule books are available from the CCJLSA annually)**

Adult Leaders Committee VLAT (Volunteer Leadership Association of Texas) – This is a group of concerned and involved parents that meet every other month to discuss 4-H activities and plans.

Project Leader (Volunteer) – An adult who provides structured learning experiences, personal guidance and counseling for members enrolled in their projects. This person is responsible for a 4-H group or activity, its members or other volunteers.

Project Medals – These are awarded at annual 4-H Awards Banquet. Members are recognized on county level for submitting record books or awards application forms in award program areas.

Record Book – Keeping records is an important part of completing 4-H projects. It helps a 4-H member set goals, keep track of their 4-H and community work, and a whole lot more. Record Books are usually completed in the early summer and reports a 4-H member’s activities throughout the year. It also makes them eligible to participate in yearly awards and is required for some awards.

TAMU – Texas A&M University, a land grant University that serves as headquarters for Texas A&M AgriLife Extension Service.

Texas A&M AgriLife Extension Service – This is the parent organization of the 4-H program.

VLAT – Volunteer Leaders Association of Texas – This is adult parents and leaders that support 4-H members. There are District and State levels and some County levels. One purpose of VLAT is to award scholarships to 4-H members. District 3 awards one \$500 scholarship per year. Another purpose includes help with Young County youth expenses associated with various contest activities.

Appendix

* Final updated form at Extension Office or on County website September 2019.

Appendix I

2018 – 2019 Young County 4-H MEDALS & “SPECIAL

AWARDS”

APPLICATION FORM

Return to Young County Texas AgriLife Extension Service Office by **5pm, Friday, June 28, 2019**. All information reported must be prior to the due date.

“2018/2019 4-H Year – County Awards Process”

- Face-to-face interviews for Gold Star, Silver Star and Bronze Star awards will be required by 4-H members in addition to both an application **and** record book.
- **Interviews will be from 9:45 am – 12:15 pm, Monday, July 1st, at the Extension Office.**
- Top Rookie award will be presented to a 1st year 4-H member, regardless of age, and will also require a face-to-face interview plus an application. The record book is voluntary.
- Special awards will not require an interview or record book, just the application.
- 4-H members are eligible for these awards one time in each award or achievement per age division.

Project Awards Medal for 2018-2019 (project type, example: *swine*) _____

By completing this box you are indicating which project **medal** you would like to receive this year for you 4-H project. The medals must be ordered before the banquet each year so you must complete this box to insure that a medal will be ordered for you.

Circle one or more of the “Special Awards/Achievement” you would like to apply for:

Rookie Award	Rabbit	Foods & Nutrition
Top Jr. Bronze Star Award	Fashion & Interior Design	Photography & Videography
Top Intermediate Silver Star Award	Sheep	Goat Achievement
Gold Star Award <i>(Must be 15 as of Aug. 31, 2014)</i>	Swine	Horse
Shooting Sports	Agriculture/Beef Production	Outdoor Education
Sportfishing	Community Service	Leadership
Public Speaking	Theatre & Performing Arts	Robotics
Rocketry	Citizenship	

Grade as of August 31, 2017 Junior 3rd-5th _____ Intermediate 6th-8th _____ Senior 9th 12th _____
(Age 8 and in the 3rd grade)

Date of Birth: _____ County Commissioner’s Name: _____

Name: _____ Signature: _____

Parents/Guardians Name: _____

Name of 4-H Club: _____ Years in 4-H: _____

STOP
*****IF YOU HAVE COMPLETED A RECORD BOOK OR ONLY WANT A MEDAL*****

CONTINUE IF YOU WANT TO BE CONSIDERED FOR “SPECIAL AWARDS”

AND DID NOT COMPLETE A RECORD BOOK

4-H “SPECIAL AWARDS” APPLICATION FORM

(If more space is needed feel free to add to the table)

4-H CITIZENSHIP AND 4-H COMMUNITY SERVICE: List up to your top citizenship and 4-H community service activities. List activity, year, and your role in the activity (use Y=performed yourself; M=member of a group; P=provided primary leadership to the group to describe role). Describe why your citizenship and community service was important in these activities and what impact your involvement provided you to have on other people. **Put emphasis on the quality of your experience rather than quantity. (BRIEF STATEMENTS)**

Year	Activity	Role in Activity	Why it was important and/or Impact of Involvement
2018 (sample)	Canned Food Drive for County Horse Show	P	Organized canned food drive to be held at the county horse show, called members to remind them and delivered cans to local food bank. Developed an appreciation of services the food bank provides for needy families.

4-H HONORS: List your most important honors received through 4-H. List the honor, year received, level of award (e.g. L=Local; C=County; etc), and why you consider the honors listed to be the most important (i.e. how did they contribute to and provide significance toward you personal development?). **Put emphasis on the quality of your experience rather than quantity.**

Year	Award	Level of Award	Why is this award considered important to you?
2019 (sample)	1 st Place Buckle - District Horse Showmanship Award	District	At the age of 12, this was special to me because that year there were 36 in the class and I was competing against five 19 year olds. These were the competitors that I had looked up to for years with dreams of becoming as good of horsemen as they were.

4-H LEADERSHIP ROLES: List up to your top major 4-H leadership roles throughout your 4-H career. Include volunteer, promotion, and elected/appointed leadership. List roles and responsibilities, years, levels of involvement, duties and accomplishments. **Put emphasis on the quality of your experience rather than quantity.**

Year	Leadership Role	Level of Involvement	Role, Responsibilities, Duties, and/or Accomplishments (BRIEF STATEMENTS)
	VOLUNTEER		
2019 <i>(sample)</i>	<i>Teen Leader – Horse Safety</i>	<i>County</i>	<i>VOLUNTEER – Taught horse safety lesson for the Progressive Farmers Farm Safety Day Camp for 3rd grade student in the county for 2 years. A total of 359 people attended these lessons.</i>
	ELECTED/APPOINTED		
2019 <i>(sample)</i>	<i>District 4-H Delegate</i>	<i>District</i>	<i>ELECTED – Represented Young County as District 4-H Delegate.</i>
	PROMOTIONAL		
2019 <i>(sample)</i>	<i>County 4-H Kick-off</i>	<i>County</i>	<i>Led a presentation sharing my 4-H experiences with 250 people at the Young County 4-H Kickoff Event.</i>

REQUIRED: On a separate sheet of paper **write a paragraph** about “What 4-H Has Meant To Me” including information about things you have learned, interesting experiences, goals accomplished, future plans, etc.

OPTIONAL: On a separate sheet of paper you may **write a short story and include photographs** depicting information about things you have learned, interesting experiences, goals accomplished, future plans, etc.

- 3201 Hwy 16 South

Young County Extension Office
Graham, TX 76450
940/549-0737 * FAX 940/549-8140

Club Locations & Meeting Info

Young County 4-H Clubs

Lonestar 4-H Club, Graham

Leader: Christine Richards

Olney 4-H Club, Olney

Leader: Penny Berend – 940/549-0737

Parent Volunteer: Julie Hinson

Salt Fork 4-H Club, Newcastle

Leader: Carmen Neal

Parent Volunteer: Caitlin Campbell

4-H Shooting Sports Club, Young County

Leader: Catherin DeLong

Disciplines:

Archery-Catherine

Rifle-Gary Dunnam

Shotgun-NA

4-H Council/Adult Leaders Meetings

Third Monday of each month

5:30pm, North Central Texas College

All dates are tentative and subject to change.

Call the club leader or the **Extension office at 940-549-0737**

for more information on any of these events!

ALL PARENTS AND 4-H MEMBERS ARE

WELCOME AT ALL MEETINGS!



Texas AgriLife Extension Service
DECLARATION OF ELIGIBILITY FORM

*This form is requested in accordance with the requirement of
the Texas Education Code and in cooperation with the Texas Education Agency
and local public school board policies.*



PARENT/GUARDIAN/COUNTY EXTENSION AGENT – Complete This Section

In accordance with 4-H policy, provided by our local Extension office, I respectfully request (check [✓] one):

- Academic eligibility information only
- Academic eligibility information and authorization to receive an excused absence from school

Date: _____ Name of Activity: _____

Signature of Parent/Guardian: _____

I hereby certify that _____ is a member of 4-H in
_____ County and is scheduled to participate in this activity representing 4-H.
He/she will be under the supervision of the Texas AgriLife Extension Service faculty or agency's designated volunteer
leader.

_____ Date

_____ County Extension Agent

PRINCIPAL – Complete This Section

Check [✓] one:

- I do certify that the student is academically eligible to participate in the above mentioned
extracurricular activity.
- I do not certify the student because he/she is NOT academically eligible to participate in the
above mentioned extracurricular activity.

Check [✓] one:

- An excused absence will be granted.
- An excused absence will **not** be granted.
- Does not apply.

Signed: _____
Principal or Designee

Date: _____

_____ Name of School

Instructions: Complete one form per activity. 4-H member should return original form to the County Extension Office.

2018-2019 (TENTATIVE) 4-H DATES

ANNUAL CALENDAR COMING SOON!

District 3 4-H & Youth

2018 – 2019 IMPORTANT DISTRICT DATES

2018

October 29	Nutrition, Horse & Beef Quiz Bowls
November 3	Food Show
November 7 or 8	Livestock Judging
November 28	Food Challenge
December 10	Livestock Skill-A-Thon & Ag Product ID
December 12	Leaders 4 Life

2019

April 5 or 12	Fashion Storyboard
April 6 or 13	Fashion Show
April 6 or 13	Duds to Dazzle
April 15	Horse Judging
April 24	Roundup & Share the Fun, and Photography Results
April 24	Consumer Decision Making
April 26	Range & Plant I.D. Contest
April 27	Rifle / Pistol Contest
May	Council Officer Applications
May 4	Archery Contest
May 18	Trap Contest
June 10-13	State Roundup & Share the Fun Contests
June 19-21	Horse Show
June 25-27	Teen Leader Lab
July 11	Record Book Judging

To: County Extension Agents and Volunteer Program Managers

All YPS (Youth Protection Standards) information and forms are available at the web sites listed below. This includes the YPS Procedures Manual, Volunteer Handbook, and an updated transmittal form. These files are also attached to this e-mail.

Texas 4-H Web Site: <http://texas4-h.tamu.edu>

Organizational Development Unit Web Site: <http://od.tamu.edu>

Volunteer Screening: All volunteers are to be screened every year. The cost of the screening is \$5 per year and can be paid at the time of enrollment on 4-H Connect.

Application Processing: Screening of volunteers is not conducted until payment is received in the Texas 4-H YPS Office. Therefore, counties should plan to submit volunteers for screening **at least one month prior** to the event. Volunteer applications are processed for screening on a **bi-weekly basis** in the Texas 4-H YPS Office.

Volunteer Certificates: 4-H volunteers may access their volunteer certificate on 4-H Connect once screening is complete and their profile is approved. Master Volunteers, BLT & EFNEP Volunteers: Volunteer cards will no longer be made for volunteers and sent to the county Extension office for distribution. Instead, when these volunteers are approved through the screening process, a volunteer certificate will be e-mailed to the county Extension office for distribution.

County Extension Agent Profiles: Since County Extension Agents are screened through AgriLife Extension Human Resources, they do not have to be screened through YPS. When County Extension Agents create or reactivate a profile and it indicates screening is needed, call or e-mail the YPS office to have the screening information updated.

Re-activating 4-H CONNECT Profiles: When volunteers enroll for the new 4-H year, it is important they reactivate their profile on 4-H CONNECT and not create a new profile. If a new profile is created, the volunteer screening information will not transfer to the new profile. Therefore, the system will indicate the volunteer needs to be screened.

As always, if you have questions regarding volunteer screening, please contact me.

Sincerely,

Courtney F. Dodd, CVA, Extension Program Specialist, 4-H & Youth Development
Texas A&M AgriLife Extension Service, The Texas A&M System
4180 State Highway 6, College Station, TX 77845, Phone: 979.845.6533, FAX: 979.845.6495
E-mail: cfdodd@ag.tamu.edu

4-H is a community of young people across America who is learning leadership, citizenship, and life skills.

4-H Websites

Young County	http://young.agrilife.org/
Texas 4-H Home Page	http://texas4-h.tamu.edu/
National 4-H	www.4-h.org/
Animal Science	http://animalscience.tamu.edu/
Texas A&M AgriLife Extension Service	http://agrilifeextension.tamu.edu/
Extension Bookstore	http://www.agrilifebookstore.org/
Texas 4-H Center	http://texas4hcenter.tamu.edu/
Texas 4-H Horse Show	http://animalscience.tamu.edu/livestock-species/equine/state-4h-show/
Family & Community Health	http://fcs.tamu.edu/
Shooting Sports	http://shootingsports.tamu.edu/
Community Development	http://communities.tamu.edu/
Club Manager Resources	http://texas4-h.tamu.edu/volunteer/
4-H CONNECT:	https://tx.4honline.com

You may reach the Agriculture & Natural Resources Website from the Young County website.

You may reach the Texas 4-H Home Page from the Young County website.

You may reach the 4-H Record Book website from the Texas 4-H Home Page.

Young County 4-H

In support of the 4-H Club Motto, "To Make the Best Better,"

I pledge My **HEAD** to clearer thinking,

My **HEART** to greater loyalty,

My **HANDS** to larger service, and

My **HEALTH** to better living,

for my **CLUB**, my **COMMUNITY**, my **COUNTRY** and my **WORLD**.

